



**High performance for each condition and every environment**

The industrial plugs and sockets are designed to withstand highly specific operating conditions that widely vary depending in which place and situation they are used (industrial sites, waterproof and corrosive environments...). These products are all in conformity with the international IEC 60309-1 and IEC 60309-2 standards.

**Very high performing products**

These products have been designed to resist aggressive environmental conditions and chemical agents:

- Solid, well-sealed and resistant to chemical and atmospheric agents
- IK08 shock resistant
- Plastic materials specially for industrial use
- Stainless steel screws

**A 360° product's coverage**

It is a complete offer of industrial plugs and sockets for low and extra low voltage for 16, 32, 64, 125A. All versions are in conformity with the IEC standards:

**The offer:**

- Wander plugs and sockets
- Wall mounting plugs and sockets
- Panel mounting plugs and sockets

**Special versions:**

- 90° angled plugs
- phase inverter plugs
- plugs and sockets for containers

**Series 57  
New under each point of view**

Schyller's research has even more improved its wander and panel plugs-sockets in terms of velocity of installation, safety, facility without neglecting the Quality.

With the new Series 57, 16A and 32A, IP 44 and IP 67, all operations are absolutely simple and the result is always and extremely safe. The innovating solutions proposed: the new connection, the new opening system, the new cable clamp and the new design put this series among the innovating products on the market.

Series 57



**Easy to open**

It could be just a detail but with the new Series 57 you immediately begin to save time. The wander plugs/sockets are delivered with the handgrip not fully tightened onto the body therefore for the first installation you can open it just with your hands. The reopening is extremely fast and easy; you just need to make a simple pressure (with a tool) on the appropriate stainless steel device (a spring) and that's it! The closing happens by means of the manual rotation of the two bodies and a "CLICK" advises when the closing has occurred.

**Fast to connect**

A fast, safe and everlasting connection is the first "MUST" a plug/socket has to offer. This is the reason why Schyller has given a same orientation to the clamp's screws in order to facilitate and speed up the connection. The screws are supplied completely unscrewed (and may not be lost) with the aim to save time during the installation; their line and cross slotted head enables the use any type of available screwdriver.



**Safe to clamp**

Each detail of the new Series 57 has been carefully studied to be safe and functional. The new "external" cable clamp, with its integrated cable-gland, can be easily tightened with a hand; once you have tightened it, you do not need to retighten it. It does not fear vibrations or mechanical stresses as its conception prevents the accidental unscrewing or loosening.

## Series 57

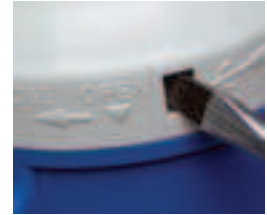


### NEW ORIENTATION

These products have a new connection criteria. It consists in having the clamps' screws on the same side avoiding the turning of the body to reach the screws. During the screwing the hands are completely safe as the blade of the screwdriver cannot slide and hurt the hands because it is surrounded by the cage of the body.

### OPENING AND CLOSING

The opening and closing of the wander plugs and sockets is safe, very simple and intuitive. The high-relief symbols, on the handgrip, clearly show how to open the plug or socket. The pressure of a tool on the appropriate device, rapidly releases the body from the handgrip. The closing happens by means of a quarter turn rotation of one part on the other through three slides which give the appropriate resistance to the mechanical traction.

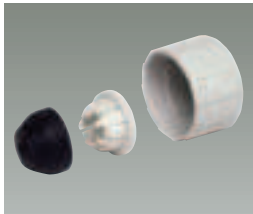


### THE CLOSING SYSTEM

The closing device, a spring, is made of stainless steel in order to give an everlasting durability to the opening and closing system. Its shape and elasticity give also the possibility to understand when the closing has occurred correctly as a "click" sound advises you.

### THE RING NUT OF THE CABLE CLAMP

The special solution introduced in the ring nut of the wander plugs and sockets confer to it the impossibility to be lost as it stays automatically hooked on the handgrip. Moreover once you have tightened it there is no need to do it again; it avoids the self-unscrewing due to vibrations and mechanical stresses.

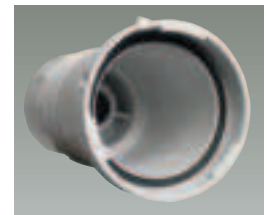


### THE "EXTERNAL" CABLE CLAMP

The structure and shape of the Series 57 has been conceived to give the IP degree of protection and the clamping in the same place "externally". The elasticity of the cable gland guarantees the perfect adhesion to the cable assuring the IP 67 while the cable clamp, with its varying diameter, firmly grabs the cable. On both the IP44 and IP67 of the wander plugs and sockets is available the same cable clamping system.

### THE GASKET

On the IP67 versions the tightness, between the handgrip and the body, to the solid and liquid agents is given by the internal gasket which is compressed by the two parts when closed together.



### THE CAP

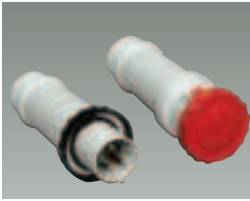
The cap of the IP44 wander socket is provided of a fin for a sure and easy handling during the insertion into the plug. On it there are three reliefs which increase the grip.

### EVERLASTING

As for the spring of the closing device, all the parts that are mechanically mostly stressed are made of stainless steel in order to give a life long reliability. The engineering polymers with which the product is made of, gives to the it characteristics of maximum insulation, mechanical strength, as well as high resistance to chemical agents, to fire and abnormal heat up to 850° (glow wire test).







### PLUGS AND SOCKETS 63A and 125A

These products are designed to suit every situation, from the railway stations to the building sites and to be used in all environments, from the dusty-muddy agricultural sector to a corrosive chemical site.

### THERMAL PERFORMANCE 63A and 125A

The housing and the contact holders are made of high quality engineering polymers which give to the product characteristics of maximum insulation, mechanical strength, as well as high resistance to chemical agents, to fire and abnormal heat up to 850° (glow wire test).



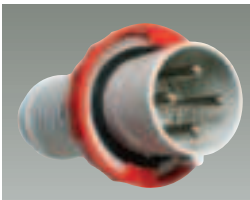
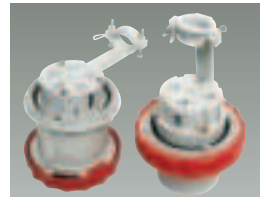
### QUALITY CONTACT 63A and 125A

No weather problems as all sockets' sleeves and plugs' pins are nickelplated (through a galvanic process) ensuring maximum protection against corrosion and guaranteeing optimum electrical and mechanical performance even in very humid and dusty environments.

### SAFE CLAMPING 63A and 125A

The mechanical withstand of the cable in the socket and plug is ensured by a cable clamp which tightens the cable through two screws, avoiding dangerous mechanical stress on the terminals.

The cable clamp may swivel facilitating the connection on the terminals.



### WATERTIGHT 63A and 125A

The water tightness is ensured by a neoprene sealing gasket. In the IP 67 version the locking ring is designed according to researched ergonomic criteria in order to facilitate the operations.

### PHASE INVERTERS

Designed to solve problems concerning electrical connections of all rotatory equipment quickly and safely. In fact, it is possible to invert two of the plug's pins and hence the rotatory direction of the motor by using an ordinary screwdriver. In this way opening the plug to change the cable connection is avoided.

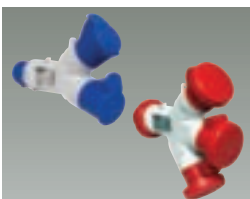


### 90° WANDER PLUGS

This version is characterized by the absence of curves hence the mechanical stresses upon the cable. It reduces the bulk of the connection between itself and a panel socket.

### SYSTEM ADAPTERS

They have been completely renewed and new versions have been added to the offer. Now it is possible to connect industrial sockets to domestic plugs with the new French and English standard, beyond the already available Italian and German standard



### MULTIPLE WAY ADAPTERS

A completely new range IP44 and 67 with 2 or 3 ways, which enables the connection of different tools to the same socket, assuring maximum safety to the users together with maximum flexibility and freedom of work. The innovating structure, grants high mechanical resistance and facilitate the handling in every conditions of use.


**LOW VOLTAGE**

Rated current	Nr Poles	Rated voltage Un (V)	Freq Hz	Pos E	Wander plug See page 10		90° wander plug See page 11		Wall plug See page 12		Panel plug See page 13	
					IP 44	IP 67	IP 44	IP 67	IP 44	IP 67	IP 44	IP 67
<b>16A</b>	2P+E 3P+E 3P+N+E	100-130	50/60	4 h 4 h 4 h	57301 57302 57303	57351 57352 57353	21301 21302 21303	21351 21352 21353	21501 21502 21503	21551 21552 21553	21801 21802 21803	21851 21852 21853
	2P+E 3P+E 3P+N+E	200-250	50/60	6 h 9 h 9 h	57304 57305 57306	57354 57355 57356	21304 21305 21306	21354 21355 21356	21504 21505 21506	21554 21555 21556	21804 21805 21806	21854 21855 21856
	2P+E 3P+E 3P+N+E	380-415	50/60	9 h 6 h 6 h	57307 57308 57309	57357 57358 57359	21307 21308 21309	21357 21358 21359	21507 21508 21509	21557 21558 21559	21807 21808 21809	21857 21858 21859
	3P+E 3P+N+E	480-500	50/60	7 h 7 h	57311 57312	57361 57362	21311 21312	21361 21362	21511 21512	21561 21562	21811 21812	21861 21862
<b>32A</b>	2P+E 3P+E 3P+N+E	100-130	50/60	4 h 4 h 4 h	57313 57314 57315	57363 57364 57365	21313 21314 21315	21363 21364 21365	21513 21514 21515	21563 21564 21565	21813 21814 21815	21863 21864 21865
	2P+E 3P+E 3P+N+E	200-250	50/60	6 h 9 h 9 h	57316 57317 57318	57366 57367 57368	21316 21317 21318	21366 21367 21368	21516 21517 21518	21566 21567 21568	21816 21817 21818	21866 21867 21868
	2P+E 3P+E 3P+N+E	380-415	50/60	9 h 6 h 6 h	57319 57320 57321	57369 57370 57371	21319 21320 21321	21369 21370 21371	21519 21520 21521	21569 21570 21571	21819 21820 21821	21869 21870 21871
	3P+E 3P+N+E	380-440 480-500	50/60	3 h 7 h 7 h		60367		23367				
<b>63A</b>	3P+E 3P+N+E	100-130	50/60	4 h 4 h		17376 17377				17576 17577		
	2P+E 3P+E 3P+N+E	200-250	50/60	6 h 9 h 9 h		17378 17379 17380				17578 17579 17580		
	3P+E 3P+N+E	380-415	50/60	6 h 6 h		17382 17383				17582 17583		
	3P+E 3P+N+E	480-500	50/60	7 h 7 h		17385 17386				17585 17586		
<b>125A</b>	3P+E 3P+N+E	100-130	50/60	4 h 4 h		17388 17389				17588 17589		
	2P+E 3P+E 3P+N+E	200-250	50/60	6 h 9 h 9 h		17390 17391 17392				17590 17591 17592		
	3P+E 3P+N+E	380-415	50/60	6 h 6 h		17394 17395				17594 17595		
	3P+E 3P+N+E	480-500	50/60	7 h 7 h		17397 17398				17597 17598		

**VERY LOW VOLTAGE**

<b>16A</b>	2P 3P	20-25	50/60	w.r. w.r.	18301 18302	18351 18352			18501 18502			
	2P 3P	40-50	50/60	12 h 12 h	18303 18304	18353 18354			18503 18504			
	2P 3P	20-25/40-50 20-25/40-50	100 to 200	4 h 4 h	18305 18306	18355 18356			18505 18506			
	2P 3P	20-25/40-50 20-25/40-50	401 to 500	11 h 11 h	18311 18312	18361 18362			18511 18512			
2P	20-25/40-50	d.c.	10 h		18313	18363			18513			
<b>32A</b>	2P 3P	20-25	50/60	w.r. w.r.	18315 18316	18365 18366			18515 18516			
	2P 3P	40-50	50/60	12 h 12 h	18317 18318	18367 18368			18517 18518			
	2P 3P	20-25/40-50 20-25/40-50	100 to 200	4 h 4 h	18319 18320	18369 18370			18519 18520			
	2P 3P	20-25/40-50 20-25/40-50	401 to 500	11 h 11 h	18325 18326	18375 18376			18525 18526			
2P	20-25/40-50	d.c.	10 h		18327	18377			18527			

**PHASE INVERTER**

<b>16A</b>	3P+E 3P+N+E	200-250	50/60	9 h 9 h	17001 17011	17006 17016	21219 21220	21269 21270	21203 21204	21253 21254	21235 21236	21285 21286
	3P+E 3P+N+E	380-415	50/60	6 h 6 h	17002 17003	17002 17003	21221 21222	21271 21272	21205 21206	21255 21256	21237 21238	21287 21288
	3P+E 3P+N+E	480-500	50/60	7 h 7 h	17012 17013	17017 17018	21223 21224	21273 21274	21207 21208	21257 21258	21239 21240	21289 21290



Wander socket See page 14		Small wall socket See page 15		Wall socket See page 16		Straight panel socket See page 17		Angled panel socket See page 18	
IP 44	IP 67	IP 44	IP 67	IP 44	IP 67	IP 44	IP 67	IP 44	IP 67
57401	57451	17101	17151	21101	21151	57601	57651	57201	57251
57402	57452	17102	17152	21102	21152	57602	57652	57202	57252
57403	57453	17103	17153	21103	21153	57603	57653	57203	57253
57404	57454	17104	17154	21104	21154	57604	57654	57204	57254
57405	57455	17105	17155	21105	21155	57605	57655	57205	57255
57406	57456	17106	17156	21106	21156	57606	57656	57206	57256
57407	57457	17107	17157	21107	21157	57607	57657	57207	57257
57408	57458	17108	17158	21108	21158	57608	57658	57208	57258
57409	57459	17109	17159	21109	21159	57609	57659	57209	57259
57411	57461	17111	17161	21111	21161	57611	57661	57211	57261
57412	57462	17112	17162	21112	21162	57612	57662	57212	57262
57413	57463	17113	17163	21113	21163	57613	57663	57213	57263
57414	57464	17114	17164	21114	21164	57614	57664	57214	57264
57415	57465	17115	17165	21115	21165	57615	57665	57215	57265
57416	57466	17116	17166	21116	21166	57616	57666	57216	57266
57417	57467	17117	17167	21117	21167	57617	57667	57217	57267
57418	57468	17118	17168	21118	21168	57618	57668	57218	57268
57419	57469	17119	17169	21119	21169	57619	57669	57219	57269
57420	57470	17120	17170	21120	21170	57620	57670	57220	57270
57421	57471	17121	17171	21121	21171	57621	57671	57221	57271
	60467		20167		23167		60667		60267
57423	57473	17123	17173	21123	21173	57623	57673	57223	57273
57424	57474	17124	17174	21124	21174	57624	57674	57224	57274
	17476				17176		17676		17276
	17477				17177		17677		17277
	17478				17178		17678		17278
	17479				17179		17679		17279
	17480				17180		17680		17280
	17482				17182		17682		17282
	17483				17183		17683		17283
	17485				17185		17685		17285
	17486				17186		17686		17286
	17488				17588		17688		17288
	17489				17589		17689		17289
	17490				17190		17690		17290
	17491				17191		17691		17291
	17492				17192		17692		17292
	17494				17194		17694		17294
	17495				17195		17695		17295
	17497				17197		17697		17297
	17498				17198		17698		17298

18401	18451	18101	18151			18601	18651		
18402	18452	18102	18152			18602	18652		
18403	18453	18103	18153			18603	18653		
18404	18454	18104	18154			18604	18654		
18405	18455	18105	18155			18605	18655		
18406	18456	18106	18156			18606	18656		
18411	18461	18111	18161			18611	18661		
18412	18462	18112	18162			18612	18662		
18413	18463	18113	18163			18613	18663		
18415	18465	18115	18165			18615	18665		
18416	18466	18116	18166			18616	18666		
18417	18467	18117	18167			18617	18667		
18418	18468	18118	18168			18618	18668		
18419	18469	18119	18169			18619	18669		
18420	18470	18120	18170			18620	18670		
18425	18475	18125	18175			18625	18675		
18426	18476	18126	18176			18626	18676		
18427	18477	18127	18177			18627	18677		

## WANDER PLUGS

They allow the connection between fix and mobile appliances in total safety and reliability.

**High quality housing**  
Made of **selfextinguishing** engineering polymer.  
**High mechanical resistance** IK08 protection degree against external mechanical impacts, according to EN 50 102.

**High fire resistance**  
All parts pass the Glow wire test with a temperature of 850° a target well over the IEC 695-2-1 limit.

**Connection terminals** with captive screws completely loosened.

**Pins made of Nikel-plated brass** to avoid dust deposition.  
Stainless steel screws.

**Cable entry:**  
IP44-IP67  
Ø cable clamp  
16A 8-15 mm  
32A 11.5-21 mm

**Cable entry:**  
IP67 IP67  
Ø cable cable gland  
63A 17-31 mm PG36  
125A 26-48 mm PG48



## LOW VOLTAGE

Rated current	Nr Poles	Rated voltage Un (V)	Freq Hz	Pos E	Code			
					IP 44	IP 67		
16A	2P+E 3P+E 3P+N+E	100-130	50/60	4 h 4 h 4 h	57301 57302 57303	57351 57352 57353		
	2P+E 3P+E 3P+N+E	200-250	50/60	6 h 9 h 9 h	57304 57305 57306	57354 57355 57356		
	2P+E 3P+E 3P+N+E	380-415	50/60	9 h 6 h 6 h	57307 57308 57309	57357 57358 57359		
	3P+E 3P+N+E	480-500	50/60	7 h 7 h	57311 57312	57361 57362		
	32A	2P+E 3P+E 3P+N+E	100-130	50/60	4 h 4 h 4 h	57313 57314 57315	57363 57364 57365	
		2P+E 3P+E 3P+N+E	200-250	50/60	6 h 9 h 9 h	57316 57317 57318	57366 57367 57368	
		2P+E 3P+E 3P+N+E	380-415	50/60	9 h 6 h 6 h	57319 57320 57321	57369 57370 57371	
		3P+E 3P+N+E	480-500	50/60	7 h 7 h	57323 57324	57373 57374	
		63A	3P+E 3P+N+E	100-130	50/60	4 h 4 h		17376 17377
			2P+E 3P+E 3P+N+E	200-250	50/60	6 h 9 h 9 h		17378 17379 17380
			3P+E 3P+N+E	380-415	50/60	6 h 6 h		17382 17383
			3P+E 3P+N+E	480-500	50/60	7 h 7 h		17385 17386
125A			3P+E 3P+N+E	100-130	50/60	4 h 4 h		17388 17389
			2P+E 3P+E 3P+N+E	200-250	50/60	6 h 9 h 9 h		17390 17391 17392
			3P+E 3P+N+E	380-415	50/60	6 h 6 h		17394 17395
			3P+E 3P+N+E	480-500	50/60	7 h 7 h		17397 17398

## VERY LOW VOLTAGE

Rated current	Nr Poles	Rated voltage Un (V)	Freq Hz	Pos E	Code		
					IP 44	IP 67	
16A	2P 3P	20-25	50/60	w.r. w.r.	18301 18302	18351 18352	
	2P 3P	40-50	50/60	12 h 12 h	18303 18304	18353 18354	
	2P 3P	20-25/40-50 20-25/40-50	100 to 200	4 h 4 h	18305 18306	18355 18356	
	2P 3P	20-25/40-50 20-25/40-50	401 to 500	11 h 11 h	18311 18312	18361 18362	
	2P	20-25/40-50	d.c.	10 h	18313	18363	
	32A	2P 3P	20-25	50/60	w.r. w.r.	18315 18316	18365 18366
		2P 3P	40-50	50/60	12 h 12 h	18317 18318	18367 18368
		2P 3P	20-25/40-50 20-25/40-50	100 to 200	4 h 4 h	18319 18320	18369 18370
		2P 3P	20-25/40-50 20-25/40-50	401 to 500	11 h 11 h	18325 18326	18375 18376
		2P	20-25/40-50	d.c.	10 h	18327	18377

**Selection guide** pag. 8  
**Technical data** pag. 56  
**Dimensions** pag. 61

**90° WANDER PLUGS**

They allow the connection between fix and mobile appliances reducing the depth of connection with a panel or a wall socket. They do limit the mechanical stresses on the cables due to the absence of curves.

**High quality housing**  
Made of **selfextinguishing** engineering polymer.

**High mechanical resistance**  
IK08 protection degree against external mechanical impacts, according to EN 50 102.

**High fire resistance**  
All parts pass the Glow wire test with a temperature of 850° a target well over the IEC 695-2-1 limit.

**Connection terminals** with captive screws completely loosened.

**Pins made of Nikel-plated brass** to avoid dust deposition.

Stainless steel screws

**Cable entry:**

	IP44-IP67	IP67
	∅ cable	cable gland
16A	8-15 mm	PG16 (PG21 5P)
32A	11.5-21 mm	PG21


**LOW VOLTAGE**

Rated current	Nr Poles	Rated voltage Un (V)	Freq Hz	Pos E	Code	
					IP 44	IP 67
<b>16A</b>	2P+E	100-130	50/60	4 h	<b>21301</b>	<b>21351</b>
	3P+E			4 h	<b>21302</b>	<b>21352</b>
	3P+N+E			4 h	<b>21303</b>	<b>21353</b>
	2P+E	200-250	50/60	6 h	<b>21304</b>	<b>21354</b>
	3P+E			9 h	<b>21305</b>	<b>21355</b>
	3P+N+E			9 h	<b>21306</b>	<b>21356</b>
	2P+E	380-415	50/60	9 h	<b>21307</b>	<b>21357</b>
	3P+E			6 h	<b>21308</b>	<b>21358</b>
	3P+N+E			6 h	<b>21309</b>	<b>21359</b>
	3P+E	480-500	50/60	7 h	<b>21311</b>	<b>21361</b>
	3P+N+E			7 h	<b>21312</b>	<b>21362</b>
	<b>32A</b>	2P+E	100-130	50/60	4 h	<b>21313</b>
3P+E		4 h			<b>21314</b>	<b>21364</b>
3P+N+E		4 h			<b>21315</b>	<b>21365</b>
2P+E		200-250	50/60	6 h	<b>21316</b>	<b>21366</b>
3P+E				9 h	<b>21317</b>	<b>21367</b>
3P+N+E				9 h	<b>21318</b>	<b>21368</b>
2P+E		380-415	50/60	9 h	<b>21319</b>	<b>21369</b>
3P+E				6 h	<b>21320</b>	<b>21370</b>
3P+N+E				6 h	<b>21321</b>	<b>21371</b>
3P+E		480-500	50/60	7 h	<b>21323</b>	<b>21373</b>
3P+N+E				7 h	<b>21324</b>	<b>21374</b>

**PHASE INVERTER WANDER PLUGS**

Safe and quick in solving rotatory equipment's problems by simply inverting the position of **two** plug's pins using an ordinary screwdriver.

**High quality housing**  
Made of **selfextinguishing** engineering polymer.

**High mechanical resistance**  
IK08 protection degree against external mechanical impacts, according to EN 50 102.

**High fire resistance**  
All parts pass the Glow wire test with a temperature of 850° a target well over the IEC 695-2-1 limit.

**Connection terminals** with captive screws completely loosened.

**Cable entry:**

	IP44-IP67	IP67
	∅ cable	cable gland
16A	8-15 mm	PG16 (PG21 5P)

**Selection guide** pag. 8  
**Technical data** pag. 56  
**Dimensions** pag. 61


**LOW VOLTAGE**

Rated current	Nr Poles	Rated voltage Un (V)	Freq Hz	Pos E	Code	
					IP 44	IP 67
<b>16A</b>	3P+E	200-250	50/60	9 h	<b>17001</b>	<b>17006</b>
	3P+N+E			9 h	<b>17011</b>	<b>17016</b>
	3P+E	380-415	50/60	6 h	<b>17002</b>	<b>17007</b>
	3P+N+E			6 h	<b>17003</b>	<b>17008</b>
	3P+E	480-500	50/60	7 h	<b>17012</b>	<b>17017</b>
	3P+N+E			7 h	<b>17013</b>	<b>17018</b>
<b>16A</b>	3P+E	200-250	50/60	9 h	<b>21219</b>	<b>21269</b>
	3P+N+E			9 h	<b>21220</b>	<b>21270</b>
	3P+E	380-415	50/60	6 h	<b>21221</b>	<b>21271</b>
	3P+N+E			6 h	<b>21222</b>	<b>21272</b>
	3P+E	480-500	50/60	7 h	<b>21223</b>	<b>21273</b>
	3P+N+E			7 h	<b>21224</b>	<b>21274</b>



**WALL MOUNTED PLUGS**

They can be installed on an appliance to enable **supply from** a wander socket.

**High quality housing**  
Made of **selfextinguishing** engineering polymer.

**High mechanical resistance**  
IK08 protection degree against external mechanical impacts, according to EN 50 102.

**High fire resistance**  
All parts pass the Glow wire test with a temperature of 850° a target well over the IEC 695-2-1 limit.

**Connection terminals** with captive screws completely loosened.

**Pins made of Nikel-plated brass** to avoid dust deposition.  
Stainless steel screws.

**Cable entry:**  
IP44-IP67 IP67  
Ø cable cable gland  
16A 8-15 mm PG21  
32A 11.5-21 mm PG21  
63A 17-31 mm PG36  
125A 26-48 mm PG48


**LOW VOLTAGE**

Rated current	Nr Poles	Rated voltage Un (V)	Freq Hz	Pos E	Code			
					IP 44	IP 67		
16A	2P+E	100-130	50/60	4 h	21501	21551		
	3P+E			4 h	21502	21552		
	3P+N+E			4 h	21503	21553		
	16A	2P+E	200-250	50/60	6 h	21504	21554	
		3P+E			9 h	21505	21555	
		3P+N+E			9 h	21506	21556	
		16A	2P+E	380-415	50/60	9 h	21507	21557
	3P+E		6 h			21508	21558	
	3P+N+E		6 h			21509	21559	
	16A	3P+E	480-500	50/60	7 h	21511	21561	
		3P+N+E			7 h	21512	21562	
		32A	2P+E	100-130	50/60	4 h	21513	21563
3P+E			4 h			21514	21564	
3P+N+E	4 h		21515			21565		
32A	2P+E		200-250	50/60	6 h	21516	21566	
	3P+E				9 h	21517	21567	
	3P+N+E				9 h	21518	21568	
32A	2P+E		380-415	50/60	9 h	21519	21569	
	3P+E				6 h	21520	21570	
	3P+N+E				6 h	21521	21571	
	32A		3P+E	480-500	50/60	7 h	21523	21573
3P+N+E			7 h			21524	21574	
63A	3P+E		100-130	50/60	4 h		17576	
	3P+N+E	4 h				17577		
	63A	2P+E	200-250	50/60	6 h		17578	
		3P+E			9 h		17579	
		3P+N+E			9 h		17580	
	63A	3P+E	380-415	50/60	6 h		17582	
		3P+N+E			6 h		17583	
		63A	3P+E	480-500	50/60	7 h		17585
			3P+N+E			7 h		17586
	125A	3P+E	100-130	50/60	4 h		17588	
		3P+N+E			4 h		17589	
		125A	2P+E	200-250	50/60	6 h		17590
3P+E			9 h				17591	
3P+N+E			9 h				17592	
125A		3P+E	380-415	50/60	6 h		17594	
		3P+N+E			6 h		17595	
		125A	3P+E	480-500	50/60	7 h		17597
			3P+N+E			7 h		17598

**VERY LOW VOLTAGE**

Rated current	Nr Poles	Rated voltage Un (V)	Freq Hz	Pos E	Code		
					IP 44	Code	
16A	2P	20-25	50/60	w.r.	18501		
	3P			w.r.	18502		
	16A	2P	40-50	50/60	12 h	18503	
		3P			12 h	18504	
	16A	2P	20-25/40-50	100 to 200	4 h	18505	
		3P			4 h	18506	
	16A	2P	20-25/40-50	401 to 500	11 h	18511	
		3P			11 h	18512	
		16A	2P	20-25/40-50	d.c.	10 h	18513
	32A	2P	20-25	50/60	w.r.	18515	
		3P			w.r.	18516	
		32A	2P	40-50	50/60	12 h	18517
3P			12 h			18518	
32A		2P	20-25/40-50	100 to 200	4 h	18519	
		3P			4 h	18520	
32A		2P	20-25/40-50	401 to 500	11 h	18525	
		3P			11 h	18526	
32A		2P	20-25/40-50	d.c.	10 h	18527	



**Selection guide** pag. 8  
**Technical data** pag. 56  
**Dimensions** pag. 61

**PANEL MOUNTED PLUGS**

They can be installed on an appliance to enable **supply from** a wander socket.

**High quality housing**  
Made of **selfextinguishing** engineering polymer.

**High mechanical resistance**  
IK08 protection degree against external mechanical impacts, according to EN 50 102.

**High fire resistance**  
All parts pass the Glow wire test with a temperature of 850° a target well over the IEC 695-2-1 limit.

**Connection terminals** with captive screws completely loosened.

**Pins made of Nikel-plated brass** to avoid dust deposition.  
Stainless steel screws


**LOW VOLTAGE**

Rated current	Nr Poles	Rated voltage Un (V)	Freq Hz	Pos E	Code	
					IP 44	IP 67
<b>16A</b>	2P+E	100-130	50/60	4 h	<b>21801</b>	<b>21851</b>
	3P+E			4 h	<b>21802</b>	<b>21852</b>
	3P+N+E			4 h	<b>21803</b>	<b>21853</b>
	2P+E	200-250	50/60	6 h	<b>21804</b>	<b>21854</b>
				9 h	<b>21805</b>	<b>21855</b>
				9 h	<b>21806</b>	<b>21856</b>
	2P+E	380-415	50/60	9 h	<b>21807</b>	<b>21857</b>
				6 h	<b>21808</b>	<b>21858</b>
				6 h	<b>21809</b>	<b>21859</b>
	3P+E	480-500	50/60	7 h	<b>21811</b>	<b>21861</b>
				7 h	<b>21812</b>	<b>21862</b>
	<b>32A</b>	2P+E	100-130	50/60	4 h	<b>21813</b>
3P+E		4 h			<b>21814</b>	<b>21864</b>
3P+N+E		4 h			<b>21815</b>	<b>21865</b>
2P+E		200-250	50/60	6 h	<b>21816</b>	<b>21866</b>
				9 h	<b>21817</b>	<b>21867</b>
				9 h	<b>21818</b>	<b>21868</b>
2P+E		380-415	50/60	9 h	<b>21819</b>	<b>21869</b>
				6 h	<b>21820</b>	<b>21870</b>
				6 h	<b>21821</b>	<b>21871</b>
3P+E		480-500	50/60	7 h	<b>21823</b>	<b>21873</b>
				7 h	<b>21824</b>	<b>21874</b>

**PHASE INVERTER WALL AND PANEL PLUGS**

Safe and quick in solving rotatory equipment's problems by simply inverting the position of **two** plug's pins using an ordinary screw driver.

**High quality housing**  
Made of **selfextinguishing** engineering polymer.

**High mechanical resistance**  
IK08 protection degree against external mechanical impacts, according to EN 50 102.

**Pins made of Nikel-plated brass** to avoid dust deposition.  
Stainless steel screws


**LOW VOLTAGE - Wall**

Rated current	Nr Poles	Rated voltage Un (V)	Freq Hz	Pos E	Code	
					IP 44	IP 67
<b>16A</b>	3P+E	200-250	50/60	9 h	<b>21203</b>	<b>21253</b>
	3P+N+E			9 h	<b>21204</b>	<b>21254</b>
	3P+E	380-415	50/60	6 h	<b>21205</b>	<b>21255</b>
				6 h	<b>21206</b>	<b>21256</b>
	3P+E	480-500	50/60	7 h	<b>21207</b>	<b>21257</b>
				7 h	<b>21208</b>	<b>21258</b>

**LOW VOLTAGE - Panel**

Rated current	Nr Poles	Rated voltage Un (V)	Freq Hz	Pos E	Code	
					IP 44	IP 67
<b>16A</b>	3P+E	200-250	50/60	9 h	<b>21235</b>	<b>21285</b>
	3P+N+E			9 h	<b>21236</b>	<b>21286</b>
	3P+E	380-415	50/60	6 h	<b>21237</b>	<b>21287</b>
				6 h	<b>21238</b>	<b>21288</b>
	3P+E	480-500	50/60	7 h	<b>21239</b>	<b>21289</b>
				7 h	<b>21240</b>	<b>21290</b>

**Cable entry:**

	IP44-IP67	IP67
	∅ cable	cable gland
16A	8-15 mm	PG21

**CAPS FOR PANEL MOUNTED AND WALL MOUNTED PLUGS - IP67**

Rated current	Nr Poles	Code
		IP 67
<b>16A</b>	2P+E	<b>10016</b>
	3P+E	<b>10017</b>
	3P+N+E	<b>10018</b>
<b>32A</b>	2P+E and 3P+E	<b>10019</b>
	3P+N+E	<b>10020</b>

**Selection guide** pag. 8  
**Technical data** pag. 56  
**Dimensions** pag. 61



**WANDER SOCKETS**

They allow the connection between fix and mobile appliances in total safety and reliability.

**High quality housing**  
Made of **selfextinguishing** engineering polymer.  
**High mechanical resistance**

IK08 protection degree against external mechanical impacts, according to EN 50 102.

**High fire resistance**  
All parts pass the Glow wire test with a temperature of 850° a target well over the IEC 695-2-1 limit.

**Connection terminals** with captive screws completely loosened.

**For 63-125 A sleeves** made of **Nikel-plated brass** to avoid dust deposition in the 63-125A. Stainless steel screws

**Cable entry:**  
IP44-IP67  
Ø cable clamp  
16A 8-15 mm  
32A 11.5-21 mm

IP67 IP67  
Ø cable cable gland  
63A 17-31 mm PG36  
125A 26-48 mm PG48


**LOW VOLTAGE**

Rated current	Nr Poles	Rated voltage Un (V)	Freq Hz	Pos E	Code			
					IP 44	IP 67		
16A	2P+E 3P+E 3P+N+E	100-130	50/60	4 h 4 h 4 h	57401 57402 57403	57451 57452 57453		
	2P+E 3P+E 3P+N+E	200-250	50/60	6 h 9 h 9 h	57404 57405 57406	57454 57455 57456		
	2P+E 3P+E 3P+N+E	380-415	50/60	9 h 6 h 6 h	57407 57408 57409	57457 57458 57459		
	3P+E 3P+N+E	480-500	50/60	7 h 7 h	57411 57412	57461 57462		
	32A	2P+E 3P+E 3P+N+E	100-130	50/60	4 h 4 h 4 h	57413 57414 57415	57463 57464 57465	
		2P+E 3P+E 3P+N+E	200-250	50/60	6 h 9 h 9 h	57416 57417 57418	57466 57467 57468	
		2P+E 3P+E 3P+N+E	380-415	50/60	9 h 6 h 6 h	57419 57420 57421	57469 57470 57471	
		3P+E 3P+N+E	480-500	50/60	7 h 7 h	57423 57424	57473 57474	
		63A	3P+E 3P+N+E	100-130	50/60	4 h 4 h		17476 17477
			2P+E 3P+E 3P+N+E	200-250	50/60	6 h 9 h 9 h		17478 17479 17480
			3P+E 3P+N+E	380-415	50/60	6 h 6 h		17482 17483
			3P+E 3P+N+E	480-500	50/60	7 h 7 h		17485 17486
125A			3P+E 3P+N+E	100-130	50/60	4 h 4 h		17488 17489
			2P+E 3P+E 3P+N+E	200-250	50/60	6 h 9 h 9 h		17490 17491 17492
			3P+E 3P+N+E	380-415	50/60	6 h 6 h		17494 17495
			3P+E 3P+N+E	480-500	50/60	7 h 7 h		17497 17498

**VERY LOW VOLTAGE**

Rated current	Nr Poles	Rated voltage Un (V)	Freq Hz	Pos E	Code		
					IP 44	IP 67	
16A	2P 3P	20-25	50/60	w.r. w.r.	18401 18402	18451 18452	
	2P 3P	40-50	50/60	12 h 12 h	18403 18404	18453 18454	
	2P 3P	20-25/40-50 20-25/40-50	100 to 200	4 h 4 h	18405 18406	18455 18456	
	2P 3P	20-25/40-50 20-25/40-50	401 to 500	11 h 11 h	18411 18412	18461 18462	
	2P	20-25/40-50	d.c.	10 h	18413	18463	
	32A	2P 3P	20-25	50/60	w.r. w.r.	18415 18416	18465 18466
		2P 3P	40-50	50/60	12 h 12 h	18417 18418	18467 18468
		2P 3P	20-25/40-50 20-25/40-50	100 to 200	4 h 4 h	18419 18420	18469 18470
		2P 3P	20-25/40-50 20-25/40-50	401 to 500	11 h 11 h	18425 18426	18475 18476
		2P	20-25/40-50	d.c.	10 h	18427	18477

**Selection guide** pag. 8  
**Technical data** pag. 56  
**Dimensions** pag. 61



**SMALL WALL MOUNTED SOCKETS**

They can be wall-mounted to supply appliances with wander plugs. Their compactness is appreciated during assembling in narrow places.

**High quality housing**  
Made of **selfextinguishing** engineering polymer.  
**High mechanical resistance**  
IK08 protection degree against external mechanical impacts, according to EN 50 102.

**High fire resistance**  
All parts pass the Glow wire test with a temperature of 850° a target well over the IEC 695-2-1 limit.

**Connection terminals** with captive screws completely loosened.

**Sleeves made of Nickel-plated brass** to avoid dust deposition.  
Stainless steel screws

**Cable entry:**  
IP44-IP67 IP67  
Ø cable cable gland  
16A 8-15 mm PG21  
32A 11.5-21 mm PG21


**LOW VOLTAGE**

Rated current	Nr Poles	Rated voltage Un (V)	Freq Hz	Pos E	Code IP 44	Code IP 67
<b>16A</b>	2P+E	100-130	50/60	4 h	17101	17151
	3P+E			4 h	17102	17152
	3P+N+E			4 h	17103	17153
	2P+E	200-250	50/60	6 h	17104	17154
	3P+E			9 h	17105	17155
	3P+N+E			9 h	17106	17156
	2P+E	380-415	50/60	9 h	17107	17157
	3P+E			6 h	17108	17158
3P+N+E	6 h			17109	17159	
3P+E	480-500	50/60	7 h	17111	17161	
3P+N+E			7 h	17112	17162	
<b>32A</b>	2P+E	100-130	50/60	4 h	17113	17163
	3P+E			4 h	17114	17164
	3P+N+E			4 h	17115	17165
	2P+E	200-250	50/60	6 h	17116	17166
	3P+E			9 h	17117	17167
	3P+N+E			9 h	17118	17168
	2P+E	380-415	50/60	9 h	17119	17169
	3P+E			6 h	17120	17170
	3P+N+E			6 h	17121	17171
	3P+E	480-500	50/60	7 h	17123	17173
	3P+N+E			7 h	17124	17174

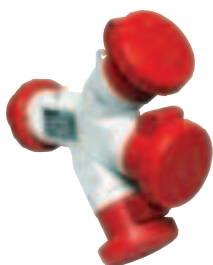
**MULTIPLE WAY ADAPTERS**

They enable the connection of different tools to the same socket

**High mechanical resistance**  
IK08 protection degree against external mechanical impacts, according to EN 50 102.

**High fire resistance**  
All parts pass the Glow wire test with a temperature of 850° a target well over the IEC 695-2-1 limit.

**Pins made of Nickel-plated brass** to avoid dust deposition.  
Stainless steel screws.


**2 WAYS ADAPTERS**

Input (Plug)			Output (Socket)			Code	Code
Rated current	Nr./poles	Rated voltage	Nr. sockets/poles	Rated voltage	Rated current	IP 44	IP 67
<b>16A</b>	1 / 2 P+ E	100-130	2 / 2 P+ E	100-130	16A	57025	57075
	1 / 2 P+ E	200-250	2 / 2 P+ E	200-250	16A	57027	57077
	1 / 2 P+ E	380-415	2 / 2 P+ E	380-415	16A	57029	57079
	1 / 3 P+ E		2 / 3 P+ E		16A	57030	57080

**3 WAYS ADAPTERS**

Input (Plug)			Output (Socket)			Code	Code
Rated current	Nr./poles	Rated voltage	Nr. sockets/poles	Rated voltage	Rated current	IP 44	IP 67
<b>16A</b>	1 / 2 P+ E	100-130	3 / 2 P+ E	100-130	16A	57031	57081
	1 / 2 P+ E	200-250	3 / 2 P+ E	200-250	16A	57033	57083
	1 / 3 P+ E	380-415	3 / 3 P+ E	380-415	16A	57036	57086
<b>32A</b>	1 / 2 P+ E	380-415	2 / 2 P+ E	200-250	16A	57037	57087
	1 / 3 P+ N+E		1 / 3 P+ N+E	380-415	32A		

**SYSTEM ADAPTER**

They enable the use of a domestic device in an industrial site. In conformity with EN 50250.

**Selection guide** pag. 8  
**Technical data** pag. 56  
**Dimensions** pag. 61



Input (EC Plug)			Output (domestic socket)	Code
Rated current	Plug side	Rated voltage	Nr. and type	
<b>16A</b>	2 P+ E	230	1 socket 10/16A 2P+E standard Italy	57020
	2 P+ E	230	2 sockets 10/16A 2P+E standard Italy	57021
	2 P+ E	230	1 socket 16A 2P+E standard Germany	57022
	2 P+ E	230	1 socket 10/16A 2P+E standard France	57023
	2 P+ E	230	1 socket 13/A 2P+E standard UK	57024



**WALL MOUNTED SOCKETS**

They can be installed on walls to enable appliance supply with a wander plug.

**High quality housing**  
Made of **selfextinguishing** engineering polymer.

**High mechanical resistance**  
IK08 protection degree against external mechanical impacts, according to EN 50 102.

**High fire resistance**  
All parts pass the Glow wire test with a temperature of 850° a target well over the IEC 695-2-1 limit.

**Connection terminals** with captive screws completely loosened.

**Sleeves made of Nickel-plated brass** to avoid dust deposition.

Stainless steel screws

**Cable entry:**

	IP44-IP67 Ø cable	IP67 cable gland
16A	8-15 mm	PG21
32A	11.5-21 mm	PG21
63A	17-31 mm	PG36
125A	26-48 mm	PG48


**LOW VOLTAGE**

Rated current	Nr Poles	Rated voltage Un (V)	Freq Hz	Pos E	Code		
					IP 44	IP 67	
16A	2P+E	100-130	50/60	4 h	21101	21151	
	3P+E			4 h	21102	21152	
	3P+N+E			4 h	21103	21153	
	16A	2P+E	200-250	50/60	6 h	21104	21154
		3P+E			9 h	21105	21155
		3P+N+E			9 h	21106	21156
		2P+E	380-415	50/60	9 h	21107	21157
	3P+E	6 h			21108	21158	
	3P+N+E	6 h			21109	21159	
	16A	3P+E	480-500	50/60	7 h	21111	21161
		3P+N+E			7 h	21112	21162
		32A	2P+E	100-130	50/60	4 h	21113
3P+E			4 h			21114	21164
3P+N+E	4 h		21115			21165	
2P+E	200-250		50/60	6 h	21116	21166	
3P+E				9 h	21117	21167	
3P+N+E				9 h	21118	21168	
32A	2P+E	380-415	50/60	9 h	21119	21169	
	3P+E			6 h	21120	21170	
	3P+N+E			6 h	21121	21171	
	3P+E	480-500	50/60	7 h	21123	21173	
3P+N+E	7 h			21124	21174		
63A	3P+E	100-130	50/60	4 h		17176	
	3P+N+E			4 h		17177	
	2P+E	200-250	50/60	6 h		17178	
	3P+E			9 h		17179	
	3P+N+E			9 h		17180	
	63A	3P+E	380-415	50/60	6 h		17182
		3P+N+E			6 h		17183
	63A	3P+E	480-500	50/60	7 h		17185
3P+N+E		7 h				17186	
125A		3P+E	100-130	50/60	4 h		17188
		3P+N+E			4 h		17189
	2P+E	200-250	50/60	6 h		17190	
	3P+E			9 h		17191	
	3P+N+E			9 h		17192	
125A	3P+E	380-415	50/60	6 h		17194	
	3P+N+E			6 h		17195	
125A	3P+E	480-500	50/60	7 h		17197	
	3P+N+E			7 h		17198	

**VERY LOW VOLTAGE**

Rated current	Nr Poles	Rated voltage Un (V)	Freq Hz	Pos E	Code		
					IP 44	IP 67	
16A	2P	20-25	50/60	w.r.	18101	18151	
	3P			w.r.	18102	18152	
	16A	2P	40-50	50/60	12 h	18103	18153
		3P			12 h	18104	18154
	16A	2P	20-25/40-50	100 to 200	4 h	18105	18155
		3P			4 h	18106	18156
	16A	2P	20-25/40-50	401 to 500	11 h	18111	18161
		3P			11 h	18112	18162
		2P	20-25/40-50	d.c.	10 h	18113	18163
	32A	2P	20-25	50/60	w.r.	18115	18165
		3P			w.r.	18116	18166
		32A	2P	40-50	50/60	12 h	18117
3P			12 h			18118	18168
32A		2P	20-25/40-50	100 to 200	4 h	18119	18169
		3P			4 h	18120	18170
32A		2P	20-25/40-50	401 to 500	11 h	18125	18175
		3P			11 h	18126	18176
32A	2P	20-25/40-50	d.c.	10 h	18127	18177	

**Selection guide** pag. 8  
**Technical data** pag. 56  
**Dimensions** pag. 61



**PANEL MOUNTED SOCKETS  
STRAIGHT**

They can be installed on panels to enable appliance supply with a wander plug.

**High quality housing**  
Made of **selfextinguishing** engineering polymer.  
**High mechanical resistance**  
IK08 protection degree against external mechanical impacts, according to EN 50 102.

**High fire resistance**  
All parts pass the Glow wire test with a temperature of 850° a target well over the IEC 695-2-1 limit.  
**Connection terminals** with captive screws completely loosened.

**For 63-125 A sleeves made of Nickel-plated brass** to avoid dust deposition.  
Stainless steel screws

**Flange dimensions**

Type	w	h
16A	65	65 mm
16A	75	75 mm
32A	75	75 mm
63A	100	107 mm
125A	110	114 mm


**LOW VOLTAGE**

Rated current	Nr Poles	Rated voltage Un (V)	Freq Hz	Pos E	Code IP 44	Code IP 67
16A	2P+E 3P+E 3P+N+E	100-130	50/60	4 h 4 h 4 h	57601 57602 57603	57651 57652 57653
	2P+E 3P+E 3P+N+E	200-250	50/60	6 h 9 h 9 h	57604 57605 57606	57654 57655 57656
	2P+E 3P+E 3P+N+E	380-415	50/60	9 h 6 h 6 h	57607 57608 57609	57657 57658 57659
	3P+E 3P+N+E	480-500	50/60	7 h 7 h	57611 57612	57661 57662
32A	2P+E 3P+E 3P+N+E	100-130	50/60	4 h 4 h 4 h	57613 57614 57615	57663 57664 57665
	2P+E 3P+E 3P+N+E	200-250	50/60	6 h 9 h 9 h	57616 57617 57618	57666 57667 57668
	2P+E 3P+E 3P+N+E	380-415	50/60	9 h 6 h 6 h	57619 57620 57621	57669 57670 57671
	3P+E 3P+N+E	480-500	50/60	7 h 7 h	57623 57624	57673 57674
63A	3P+E 3P+N+E	100-130	50/60	4 h 4 h		17676 17677
	2P+E 3P+E 3P+N+E	200-250	50/60	6 h 9 h 9 h		17678 17679 17680
	3P+E 3P+N+E	380-415	50/60	6 h 6 h		17682 17683
	3P+E 3P+N+E	480-500	50/60	7 h 7 h		17685 17686
125A	3P+E 3P+N+E	100-130	50/60	4 h 4 h		17688 17689
	2P+E 3P+E 3P+N+E	200-250	50/60	6 h 9 h 9 h		17690 17691 17692
	3P+E 3P+N+E	380-415	50/60	6 h 6 h		17694 17695
	3P+E 3P+N+E	480-500	50/60	7 h 7 h		17697 17698

**Flange dimensions**

Type	w	h
16A	65	65 mm
32A	65	65 mm


**VERY LOW VOLTAGE - Flange 65 □ 65**

Rated current	Nr Poles	Rated voltage Un (V)	Freq Hz	Pos E	Code IP 44	Code IP 67
16A	2P 3P	20-25	50/60	w.r. w.r.	18601 18602	18651 18652
	2P 3P	40-50	50/60	12 h 12 h	18603 18604	18653 18654
	2P 3P	20-25/40-50 20-25/40-50	100 to 200	4 h 4 h	18605 18606	18655 18656
	2P 3P	20-25/40-50 20-25/40-50	401 to 500	11 h 11 h	18611 18612	18661 18662
	2P	20-25/40-50	d.c.	10 h	18613	18663
	32A	2P 3P	20-25	50/60	w.r. w.r.	18615 18616
2P 3P		40-50	50/60	12 h 12 h	18617 18618	18667 18668
2P 3P		20-25/40-50 20-25/40-50	100 to 200	4 h 4 h	18619 18620	18669 18670
2P 3P		20-25/40-50 20-25/40-50	401 to 500	11 h 11 h	18625 18626	18675 18676
2P		20-25/40-50	d.c.	10 h	18627	18677

**Selection guide** pag. 8  
**Technical data** pag. 56  
**Dimensions** pag. 61

**PANEL MOUNTED SOCKETS ANGLED**

They can be mounted on a plaque, panel or machine to supply appliances with a wander plug.

They facilitate the access to an eventual upper row of sockets on a box for sockets.

**High quality housing**  
Made of **selfextinguishing** engineering polymer.

**High mechanical resistance**  
IK08 protection degree against external mechanical impacts, according to EN 50 102.

**High fire resistance**  
All parts pass the Glow wire test with a temperature of 850° a target well over the IEC 695-2-1 limit.

**Connection terminals** with captive screws completely loosened.

**For 63-125 A sleeves made of Nikel-plated brass** to avoid dust deposition.  
Stainless steel screws

**Flange dimensions**

Type	w	h
16A	65	85 mm
16A	90	100 mm
32A	90	100 mm
63A	100	107 mm
125A	110	114 mm


**LOW VOLTAGE**

Rated current	Nr Poles	Rated voltage Un (V)	Freq Hz	Pos E	Code			
					IP 44	IP 67		
16A	2P+E 3P+E 3P+N+E	100-130	50/60	4 h 4 h 4 h	57201 57202 57203	57251 57252 57253		
	2P+E 3P+E 3P+N+E	200-250	50/60	6 h 9 h 9 h	57204 57205 57206	57254 57255 57256		
	2P+E 3P+E 3P+N+E	380-415	50/60	9 h 6 h 6 h	57207 57208 57209	57257 57258 57259		
	3P+E 3P+N+E	480-500	50/60	7 h 7 h	57211 57212	57261 57262		
	32A	2P+E 3P+E 3P+N+E	100-130	50/60	4 h 4 h 4 h	57213 57214 57215	57263 57264 57265	
		2P+E 3P+E 3P+N+E	200-250	50/60	6 h 9 h 9 h	57216 57217 57218	57266 57267 57268	
		2P+E 3P+E 3P+N+E	380-415	50/60	9 h 6 h 6 h	57219 57220 57221	57269 57270 57271	
		3P+E 3P+N+E	480-500	50/60	7 h 7 h	57223 57224	57273 57274	
		63A	3P+E 3P+N+E	100-130	50/60	4 h 4 h		17276 17277
			2P+E 3P+E 3P+N+E	200-250	50/60	6 h 9 h 9 h		17278 17279 17280
			3P+E 3P+N+E	380-415	50/60	6 h 6 h		17282 17283
			3P+E 3P+N+E	480-500	50/60	7 h 7 h		17285 17286
125A			3P+E 3P+N+E	100-130	50/60	4 h 4 h		17288 17289
			2P+E 3P+E 3P+N+E	200-250	50/60	6 h 9 h 9 h		17290 17291 17292
			3P+E 3P+N+E	380-415	50/60	6 h 6 h		17294 17295
			3P+E 3P+N+E	480-500	50/60	7 h 7 h		17297 17298

**PANEL MOUNTED SOCKETS STRAIGHT**
**Flange dimensions**

Type	w	h
16A	55	55 mm
32A	55	55 mm


**VERY LOW VOLTAGE - Flange 55 x 55**

Rated current	Nr Poles	Rated voltage Un (V)	Freq Hz	Pos E	Code		
					IP 44	IP 67	
16A	2P 3P	20-25	50/60	w.r. w.r.	186011 186021	186511 186521	
	2P 3P	40-50	50/60	12 h 12 h	186031 186041	186531 186541	
	2P 3P	20-25/40-50 20-25/40-50	100 to 200	4 h 4 h	186051 186061	186551 186561	
	2P 3P	20-25/40-50 20-25/40-50	401 to 500	11 h 11 h	186111 186121	186611 186621	
	2P	20-25/40-50	d.c.	10 h	186131	186631	
	32A	2P 3P	20-25	50/60	w.r. w.r.	186151 186161	186651 186661
		2P 3P	40-50	50/60	12 h 12 h	186171 186181	186671 186681
		2P 3P	20-25/40-50 20-25/40-50	100 to 200	4 h 4 h	186191 186201	186691 186701
		2P 3P	20-25/40-50 20-25/40-50	401 to 500	11 h 11 h	186251 186261	186751 186761
		2P	20-25/40-50	d.c.	10 h	186271	186771

**Selection guide** pag. 8  
**Technical data** pag. 56  
**Dimensions** pag. 61

**PLUGS and SOCKETS FOR CONTAINER**

Designed to power containers wherever there is a need to. They ensure maximum protection also in particular aggressive environments.

**High quality housing**  
Made of **selfextinguishing** engineering polymer.

**High mechanical resistance**  
IK08 protection degree against external mechanical impacts, according to EN 50 102.

**High fire resistance**  
All parts pass the Glow wire test with a temperature of 850° a target well over the IEC 695-2-1 limit.

**Connection terminals** with captive screws completely loosened.

**Sleeves made of Nickel-plated brass** to avoid dust deposition.  
Stainless steel screws

**Cable entry:**  
IP67 cable clamp  
32A 11.5-21 mm


**LOW VOLTAGE - Wander**

Rated current	Nr Poles	Rated voltage Un (V)	Freq Hz	Pos E	Code	
					IP 67	
32A	3P+E	380-440	50/60	3 h	Plug	60367
					90° Plug	23367
					Socket	60467

**LOW VOLTAGE - Panel mounted**

Rated current	Nr Poles	Rated voltage Un (V)	Freq Hz	Pos E	Code	
32A	3P+E	380-440	50/60	3 h	Plug	23867
					Angled socket	60267
					Straight socket	60667

**LOW VOLTAGE - Wall mounted**

Rated current	Nr Poles	Rated voltage Un (V)	Freq Hz	Pos E	Code	
32A	3P+E	380-440	50/60	3 h	Small socket	20167
					Wall socket	23167

**LOW VOLTAGE - Compact**

Rated current	Nr Poles	Rated voltage Un (V)	Freq Hz	Pos E	Code	
32A	3P+E	380-440	50/60	3 h	Panel socket	14067
					Wall socket	14167

**DOMESTIC SOCKETS -IP54**

Two different disposition of the cable screws orientation of the terminal clamping: on the Side and on the Back.

**High security**  
The introduction of the shutters, according to IEC 60884 standard, avoid accidental contacts with the sleeves.

**High mechanical resistance**  
IK09 protection degree against external mechanical impacts, according to EN 50 102.

**High fire resistance**  
All parts pass the Glow wire test with a temperature of 850° a target well over the IEC 695-2-1 limit.

**Selection guide** pag. 8  
**Technical data** pag. 56  
**Dimensions** pag. 61


**FLANGE 50 x 50 - 250 V**

Current	Poles	Terminal clamping - standard	Color	Code
16A	2 P+ E	Back - Germany	RAL 7035	80272
	2 P+ E	Back - Germany	Blue	80273
	2 P+ E	Back - Germany	Black	80274
	2 P+ E	Side - Germany	RAL 7035	80277
	2 P+ E	Side - Germany	Blue	80278
	2 P+ E	Side - Germany	Black	80279

The French standard is available on demand

